



Electrolux



Air curtain with heating

Operating instructions

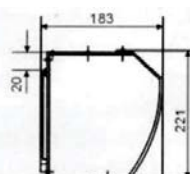
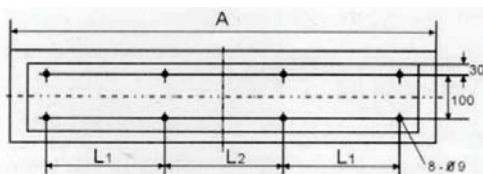
www.electrolux.com.mk

PRODUCT OUTLINE:

Open doors stand for a considerable amount of energy loss in a building. A correctly installed AIR CURTAIN can reduce the heat loss through the door as much as 90%. Except for the obvious energy savings in money, the AIR CURTAINS prevents cold draught that can cause absence due to illness and also allows shops to keep their doors open in winter time, which has proven to attract more customers. AIR CURTAINS give a true meaning to the slogan "a warm welcome". **CONDITIONS OF USE:**

Please DO NOT install the unit under following conditions:

1. Do not operate in areas with ambient temperature over 5 0C or below -10°C.
2. In steamy areas or areas with relative humidity over 95% at room temperature.
3. In areas containing oily smoke.
4. In areas where materials or gases may cause explosion.
5. Near corrosive gases.
6. In areas where the unit may be sprinkled with water.



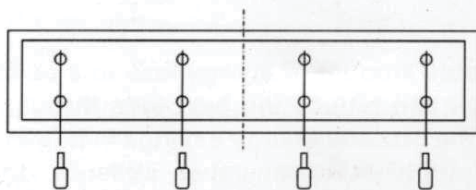
[Dimensions : mm]

Model	A	L1	L2
ARH-8509	900	270	300
ARH-8512	1200	420	300
ARH-8515	1500	570	300

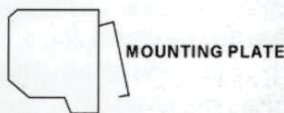
DIAGRAM:

INSTALLATION:

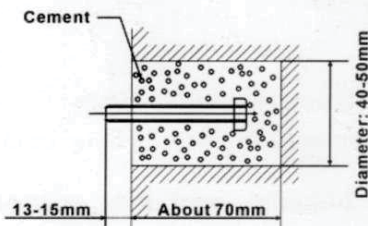
1. Unscrew the mounting plate and take it off. (Fig. 1 , Fig. 2)
2. Drill a hole following the instructions, then insert the bolt and fix it with cement. (Fig. 3)
3. Hang the mounting plate and ensure that it is fixed. (Fig. 4)
4. Install the unit onto the mounting plate and ensure that it is safely fixed. Then tighten the screws. (Fig. 5)



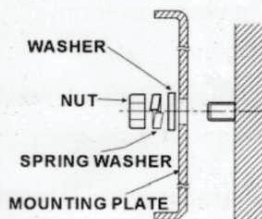
(Fig. 1)



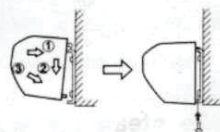
(Fig. 2)



(Fig. 3)



(Fig. 4)

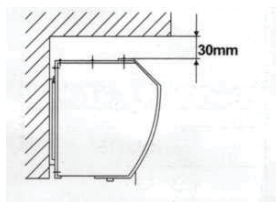


(Fig. 5)

CAUTIONS/INSTALLATION:

During installation, please pay special attention to the following points in order to obtain the ultimate efficiency.

1. Install on solid place to avoid vibrations when machine is running, and also for safety reasons. This way, unnecessary noise caused by vibration can be prevented.
2. AIR CURTAINS are designed for indoor use.
3. Choose the most suitable model depending on the height of the room. If the unit is fixed too high, the shut-off distance will be affected and the efficiency will be reduced.
4. The air is drawn in from the front of the unit and is blown out downwards.
5. Several units can be mounted next to each other in case of wide door openings. In this case, there must be a space 20-40mm between them.
6. During installation, there must be no gap between the mounting plate and the wall.
7. The distance between the unit and the ceiling must be at least 30mm.
8. The unit must be installed in horizontal position.
9. It is recommended to install the unit at a height of at least 2.3m above the ground.
10. For safe operation, use the control switch to connect the electricity source and the unit wire. If you are not going to use the unit for a long time, shut the control switch down.

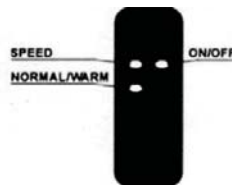


OPERATION:

Before operating, please ensure that the installation and wire connection are correct.

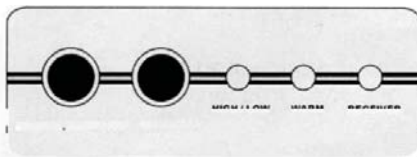
1. Operating by Remote Control:

Direct the remote control towards the receiver within a distance of 6m (60° range). Press "ON/OFF" button to start normal air flow, then press "NORMAL / WARM" to get warm air. By adjusting "HIGH / LOW" button, you can change the air volume, no matter how the unit is working, under normal air or warm air condition. When pressing "ON / OFF", if the unit is working under normal air condition, it turns off; if under warm air condition, it will be turned off automatically after 2 minutes' delay (during the delay, the green light indicator lights up).



2. Operating directly by the Receiver:

Press "NormaU Warm / OFF" button; the unit operates in normal air condition. To select normal or warm air, or to turn off the unit, just press "NormaU Warm / OFF" again. By adjusting "HIGH / LOW" button, you can change the air volume, no matter how the unit is working, under normal air or warm air condition. When pressing "ON / OFF", if the unit is working under normal air condition, it turns off; if under warm air condition, it will be turned off automatically after 2 minutes' delay (during the delay, the red light indicator lights up).



MAINTENANCE AND REPAIR:

1. Unplug the unit from the power source prior to checking or maintaining.
2. Keep electric motor or other parts away from moisture, to avoid short circuit.
3. Regular checking and maintenance is recommended. Clean the dust off. Simply clean with a cloth dampened in mild detergent.
4. Detachment of the unit must be executed only by professionals.

SPECIFICATIONS:

Model	Power (W)			Air Velocity (m / s)	Length (mm)	Weight (kg)
	Normal		Warm			
	HI	LO				
ARH-8509	160	110	6160	7.5	900	15.1
ARH-8512	230	150	7430		1200	18.2
ARH-8515	300	200	9300		1500	22.9

NOTE: Rated voltage and frequency are stated as per rating label.

NOTICE ABOUT RECYCLING

Your product is designed and manufactured with high quality materials and components which can be recycled and reused. This symbol means that electrical and electronic equipment, at their end-of-life, should be disposed of separately from your household waste.

Please dispose of this equipment at your local community waste collection/ recycling centre.

In the European Union there are separate collection systems for used electrical and electronic products. Please help us to conserve the environment we live in!

DECLARATION OF CONFORMITY

This product complies with the requirements of the directives

EMC-Directive: 89 / 336 / EEC

Low Voltage Directive: 73 / 23 / EEC as last amended by 96 / 68 / EEC

declare that the ARH-8509, ARH-8512, ARH-8515

are in compliance with the following norms:

EN 55014-1

EN 55014-2 (EN 61000-4-2 / -4 / -5 / -6 / -11)

EN 61000-6-3 : 2001+A11 :2004

EN 61000-3-2/-3

EN 60335-2-80:1997

EN 60335-1 :1994+A11+A12+A13+A14+A15+A16+CORRIG.

EN 50366:2003+A1:2006